

## Murine Anti-von Willebrand factor

### Clone GMA-022

Von Willebrand factor is a ~250 kDa glycoprotein found in blood that forms a series of large disulfide-linked multimers ranging in size from 500 kDa to >20,000 kDa. Von Willebrand factor has two important functions: mediating the adhesion of platelets to the subendothelium and protecting factor VIII from proteolysis. GMA-022 is suitable for ELISA and western blot applications.

### Description

<b>Antibody Source:</b>	mouse monoclonal, IgG <sub>1</sub>
<b>Antigen Species Bound:</b>	human
<b>Specificity:</b>	von Willebrand factor, D3 domain
<b>Immunogen:</b>	human von Willebrand factor

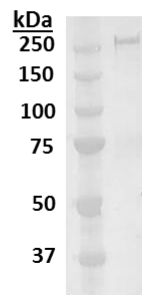
### Formulation and Storage

<b>Purity:</b>	Purified by protein G affinity chromatography from serum-free cell culture supernatant.
<b>Product Formulation:</b>	Lyophilized from a ≥1 mg/ml solution in 20 mM NaH <sub>2</sub> PO <sub>4</sub> 0.15 M NaCl, 1.0% (w/v) mannitol, pH 7.4. Concentration determined by absorbance measurement at 280 nm and using an extinction coefficient of 1.4 (ε <sub>0.1%</sub> ).
<b>Reconstitution:</b>	Reconstitute with deionized water.
<b>Storage:</b>	Store lyophilized or reconstituted and aliquoted material at -20° C for prolonged periods. Avoid freeze-thaw cycles. Alternatively, add 0.02% (w/v) sodium azide to reconstituted solution and store at 4° C.
<b>Country of Origin:</b>	USA
<b>Size Options:</b>	0.1 mg or 0.5 mg

### Applications

<b>Working Concentration:</b>	2 µg/mL recommended for western blotting. Researcher should titer antibody in specific assay.
<b>ELISA:</b>	Binds immobilized human von Willebrand factor.
<b>Immunoblotting:</b>	Binds von Willebrand factor under reduced conditions.

### GMA-022 Western blot of von Willebrand factor



### References

[1] Y. Junyi, Y. Ling, L.A. Westfield, J.E. Sadler, J. Shao. Unfolding the A2 domain of von Willebrand factor with the optical trap. (2010). *Biophys J.* 98(8):1685-1693.